

PRODUCT DATASHEET



DIMENSIONS

Ruviplan V PLUS	
Thickness	1.5mm
Weight	1.85k/m ²
Roll Dimensions (m)	
1.6 x 20	

COLOUR

Ruviplan V PLUS is available as standard in dark grey (closest RAL 7012). Other colours are available subject to minimum order quantity. Colour variations may occur between batches. Produced using high quality colour pigment and stabilisers the dark grey colour can resemble lead roof covering.

TENSILE STRENGTH

Ruviplan V PLUS membranes have excellent tensile strength and are designed to be resistant to wind uplift forces as well as thermal and structural movement of buildings.

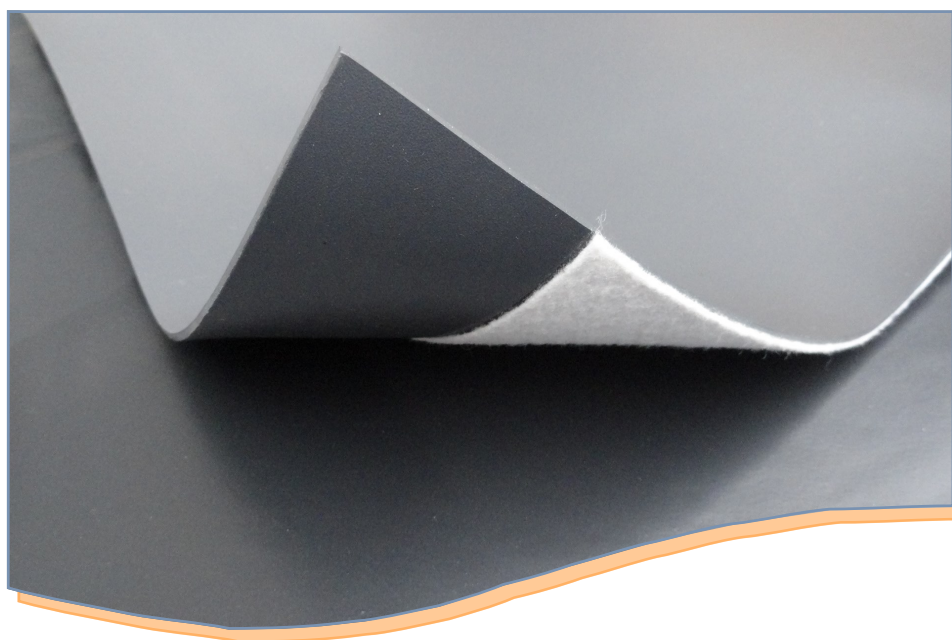
Ruviplan V PLUS Tensile Strength		
Test method	ISO EN 12311-2	
Tensile Strength N/50mm not less than	length	1100
	crossways	1100



Ruvitex UK Limited
 26-28 Molesey Road,
 Hersham, Surrey KT12 5LW
 T +44 (0) 7384 589 344
 F: +44 (0) 872 115 3075
 E: info@ruvitetex.co.uk
 Web: www.ruvitetex.co.uk

RUVIPLAN V PLUS

Ruviplan V PLUS is the principal waterproofing material for exposed roof applications where the system is described as a 'Bonded System'. **Ruviplan V PLUS** systems are suitable for new and renovation of flat, pitched and curved roof configurations.



Material

Ruviplan V PLUS membranes are manufactured from pliable PVC with a non-woven synthetic fabric on the underside of the sheet. The synthetic fabric on the underside provides the key for the adhesive bonding of the membrane to the substrate and adds strength and durability to the membrane. The PVC contains stabilisers, that make the membrane resistant to high and low temperatures, UV resistant and self extinguishing in event of fire.

Resistance to wind forces

Ruviplan V PLUS has excellent tensile and tear strength and is designed to resist the forces of wind and weather during many years of service. During the manufacturing process, the PVC and synthetic fabric are fused together to produce one homogenous sheet.

Low temperature flexibility

Ruviplan V PLUS is manufactured to withstand the low temperatures during winter. The membrane remains flexible during installation and when in use without fracturing.

Ruviplan V PLUS remains flexible at -25° C.

PRODUCT DATASHEET



COLD RESISTANCE

Ruviplan V PLUS contains stabilisers which ensure that the membrane is resistant to low and high temperatures.

Ruviplan V PLUS Cold Resistance	
Test method	ISO EN 495-5
Cold Resistance	Down to -25°C

FIRE RESISTANCE

Ruviplan V PLUS has been tested by the BRE in accordance with BS EN 13501-5:2005+A1:2009 using test method CEN/TS 1187:2012 Test 4 and has been classified Broof(t4)

Ruviplan V PLUS Fire Resistance	
Test method	EN 13501-5 CEN/TS 1187:2012 Test 4
Flammability	B _{Roof} (t4)



Ruvitex UK Limited
26-28 Molesey Road,
Hersham, Surrey KT12 5LW
T +44 (0) 7384 589 344
F: +44 (0) 872 115 3075
E: info@ruvitex.co.uk
Web: www.ruvitex.co.uk

RUVIPLAN V PLUS

Puncture Resistance

Ruviplan V PLUS membranes are resistant, without damage, to the limited foot traffic and light concentrated loads associated with the installation and maintenance work. On areas of frequent foot traffic i.e. roof access points and routes to roof-top plant etc a suitable protection layer should be used. Ruviplan walkway membrane, paving slabs on supports or other preparatory walkways should be used.

Life Expectancy

Ruviplan V PLUS has been subjected to accelerated weather tests that have indicated a minimum life expectancy of over 30 years. PVC single ply roofing membranes were first used in Europe in the 1960's and many continue to provide service after 40 years.

Application

Ruviplan V PLUS membranes suitable for use with faced ridged foam and mineral wool insulation boards, plywood and OSB boards. Ruviplan V membranes are ideal on projects where the fixing penetrations normally associated with mechanically fastened systems is either impracticable or undesirable. During application the roof temp must not be below 5°C or in excess of 30°C, as the working time and performance of the adhesive will be dramatically reduced.

Installation

Ruviplan V PLUS membranes must be installed by applicators/contractors who have the necessary experience and equipment and have undergone the required training. Inspection of overlap, seams and general installation must be carried out during and on completion of each installation.

